



TreeTOP

A flexible plantation growth and yield model

User selects the species (major Aust plantn eucs), site quality, and chooses the age and intensity of thinnings, prunings and clearfell.

The model outputs can be calibrated by the user to match any known stand outputs, then other stand manipulations can be performed, ie "virtual silviculture".

Establishment and management costs can be fully or simply specified. Prices can be specified for various log grades either as (i) net stumpage, or (ii) as Mill Door Log Value if felling and hauling costs are known.

The model synthesizes silvicultural and financial outcomes



The industry is changing and growers and processors need information to make decisions now



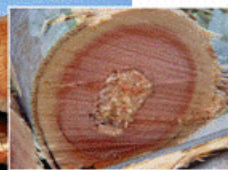
TreeTOP

AIM : to provide a (relatively) simple way for both growers and processors to ascertain the value of undertaking Thinning or Pruning (T.o.P.) plantation eucalypts under various market conditions.

Industry wants large DBH logs with a high proportion of clearwood. Transparent, adequate market values are required to motivate growers to produce such logs.

Growers want to produce the crop that provides the best land-use benefit, including financial return from timber sales. Having a reasonable and internally consistent basis to predict output yields and value from various management scenarios is essential to achieve this.

Silviculture to produce plantation eucalypt sawlogs is relatively new. There is a large body of silvic research trials, but the data has not previously been collated for comparative viewing and most research plots are <10yrs age.



TreeTOP

TreeTOP Workshop agenda

10.00 - 10.30	Introduction and quick overview
10.30 - 11.30	Starting from some known plot data; How to calibrate the model & do some "what-if"
11.30 - 12.30	Using the price and log grade panels Pruning algorithm Charts and output tables
12.30 - 1.00	LUNCH
1.00 - 2.00	Species settings, Site settings, Estab & Maint Cost details (incl auto prune), Auto-harvest,
2.00 - 2.30	Wrap-up & discussion